

## K.P.S.P Information Network

KSPS 11



TUNAPANDA

KSPS 04



KSPS 08



KSPS 10



## CBO Networks Tell A Story

Training

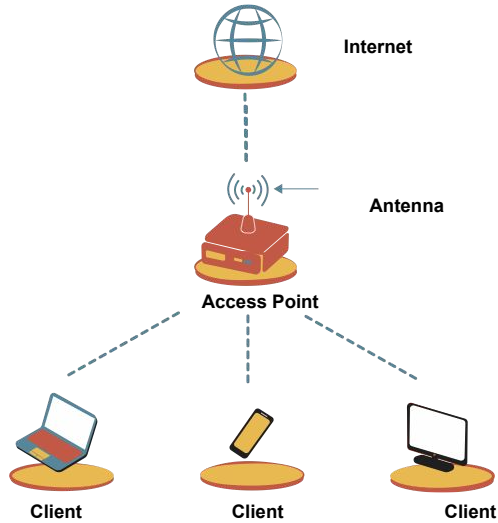
DAY 2

**Figure 1: Day 2 Agenda**

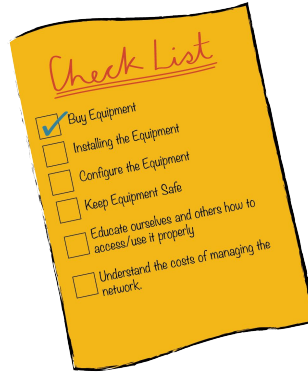
	<b>Section</b>	<b>Time</b>
I	Review of Day 1	15 min
II	Understanding and Assigning KPSPIN Roles	40 min
Short Break (10 minutes)		
III	Considerations in Operating KPSPIN	20 min
IV	Sustaining the KPSPIN	30 min
V	Wrap Up and Sign-up for Installation	5 min

## I. Day 1 Recap | Review of Day 1

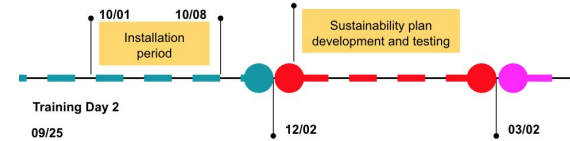
Figure 2: Review



What is a Network?



Building and Managing



Next Steps

## I. Day 1 Recap | **Q&A**

### **Questions from Day 1 Training**

## II. KPSPIN Roles | **Understanding and Assigning Roles**

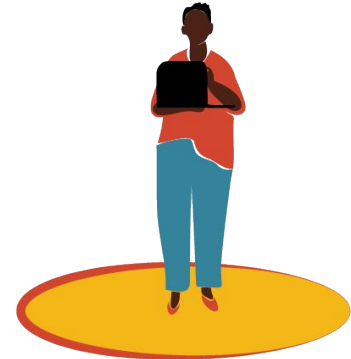
**Figure 3: K.I.N Roles**



**organizer**



**handy person**



**techie**

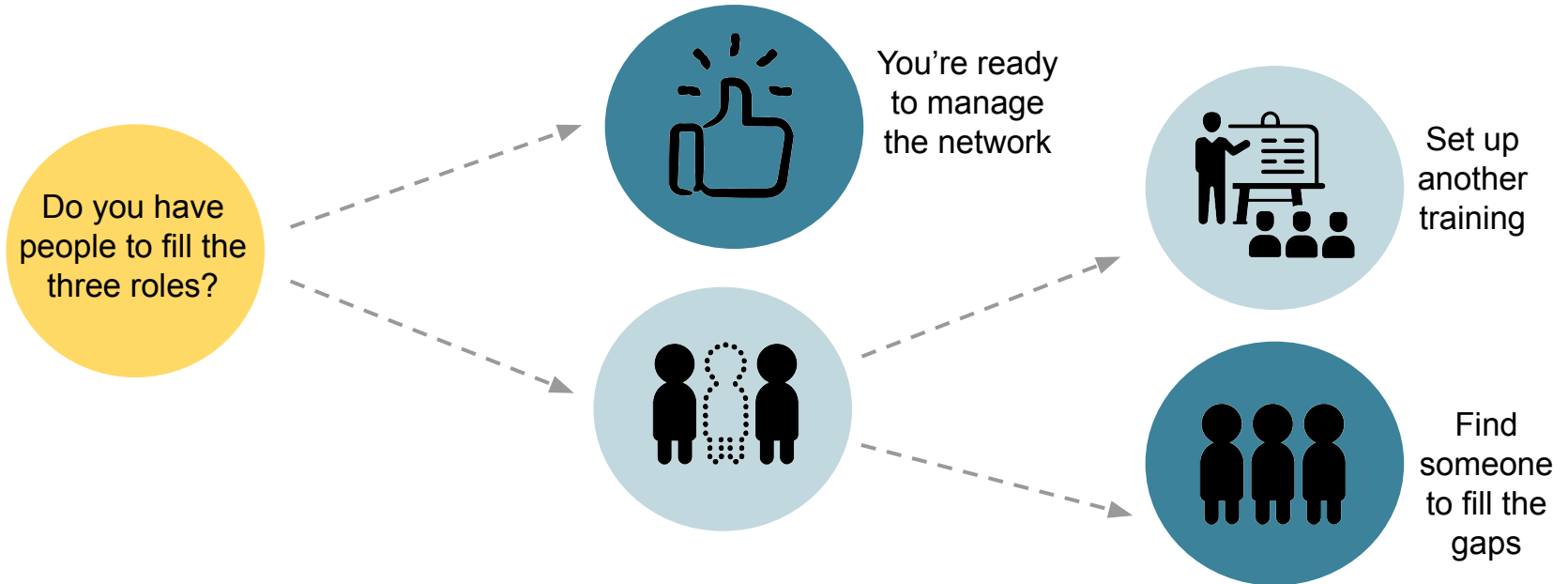
## II. KPSPIN Roles | **Understanding and Assigning Roles**

**In KPSPIN sites:**

**Who will take each role?**

## II. KPSPIN Roles | Filling Gaps for Roles

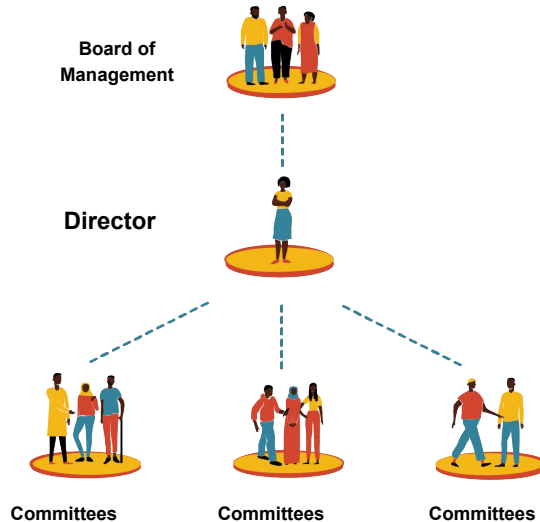
Figure 4: Filling Gaps for Roles



## II. KPSPIN Roles | Comparing Organizational Structures

Figure 5: Organizational Structures

### CBO Organization



KPSPIN Roles can be organized like CBO Committees (or not).

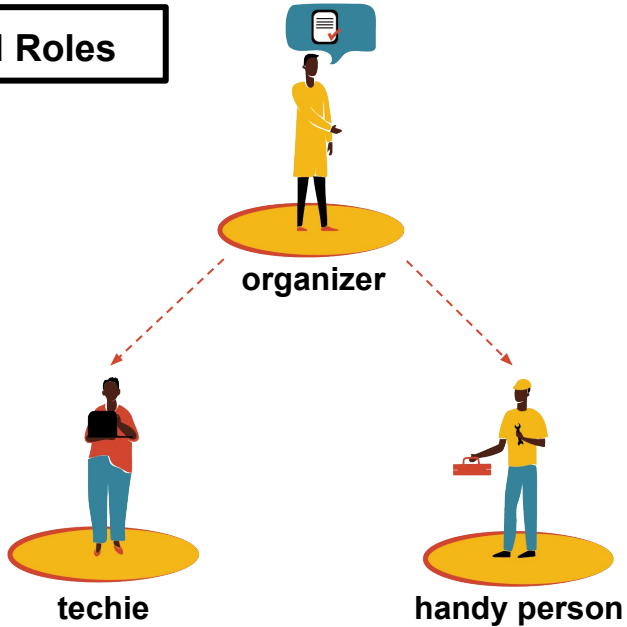
The choice is yours!



## II. KPSPIN Roles | Comparing Organizational Structures

Figure 6: Organizational Structures

### KPSPIN Roles

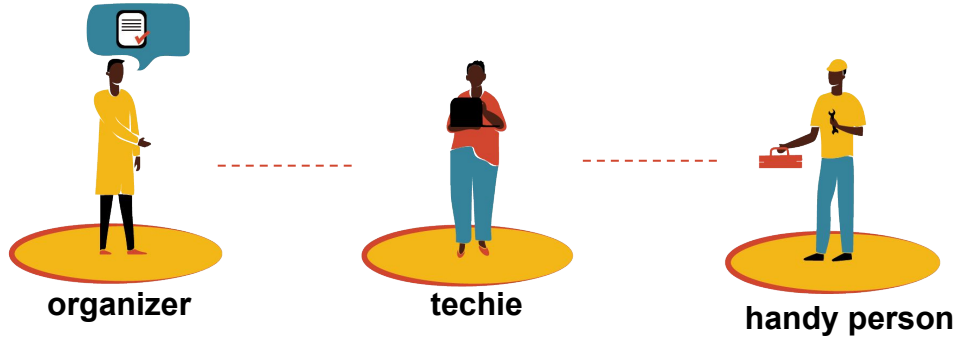


Here one person takes on lead responsibilities for the KPSPIN.

## II. KPSPIN Roles | Comparing Organizational Structures

Figure 7: Organizational Structures

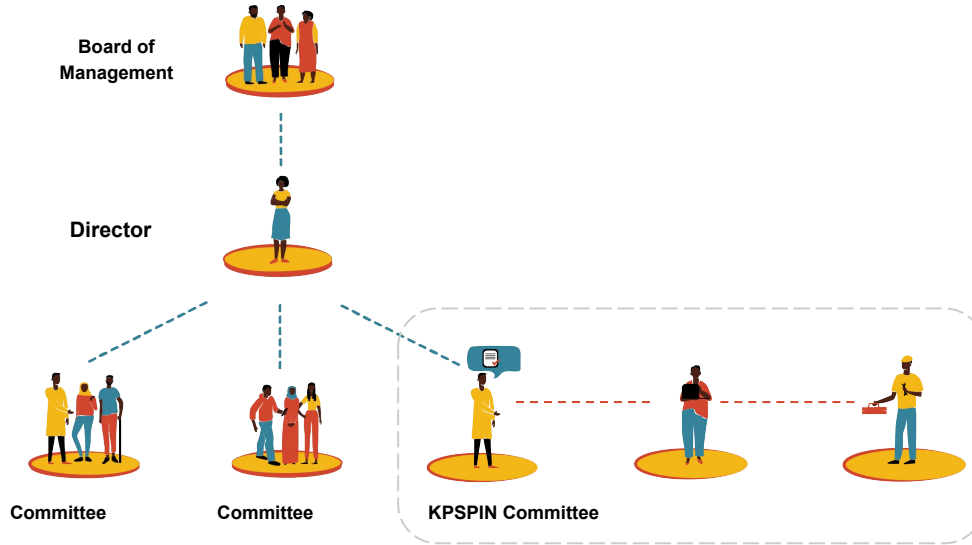
### KPSPIN Roles



Here responsibilities and decision-making are shared by a committee.

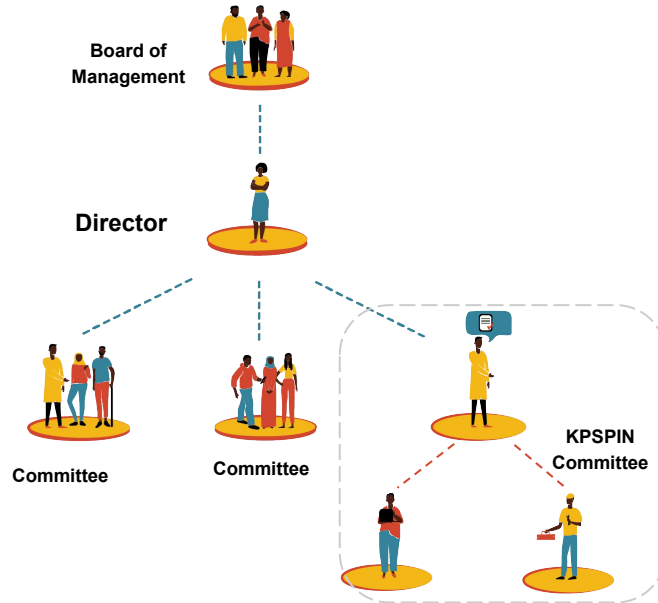
# Example: Creating a committee for KPSPIN Roles

Figure 8: Organizational Structures



# Example: Creating a committee for KPSPIN Roles

Figure 9: Organizational Structures



## II. KPSPIN Roles | **Understanding and Assigning Roles**

**For each KPSPIN Site:**  
**How will the structure work?**

## II. KPSPIN Roles | **Q&A**

**Questions**

### III. Considerations | **How can you ensure good service?**

**Figure 10: Preventing poor service**



- What is bandwidth and how does it work?
- Why might we consider restricting use of the internet?

### III. Considerations | Understanding how to ensure good service

**Figure 11: Limited attention, limited bandwidth**

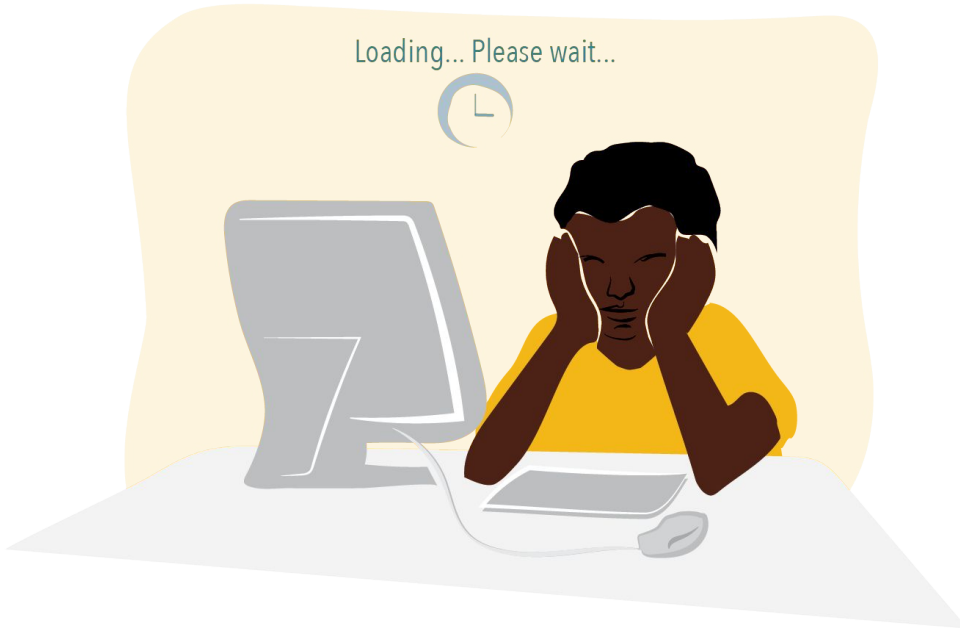


- In social groups, we have to decide who we want to pay attention to.
- We can only listen to 1 or 2 people or else we will not be paying attention to all of the people speaking, so this will hurt our friendships.



### III. Considerations | Understanding how to ensure good service

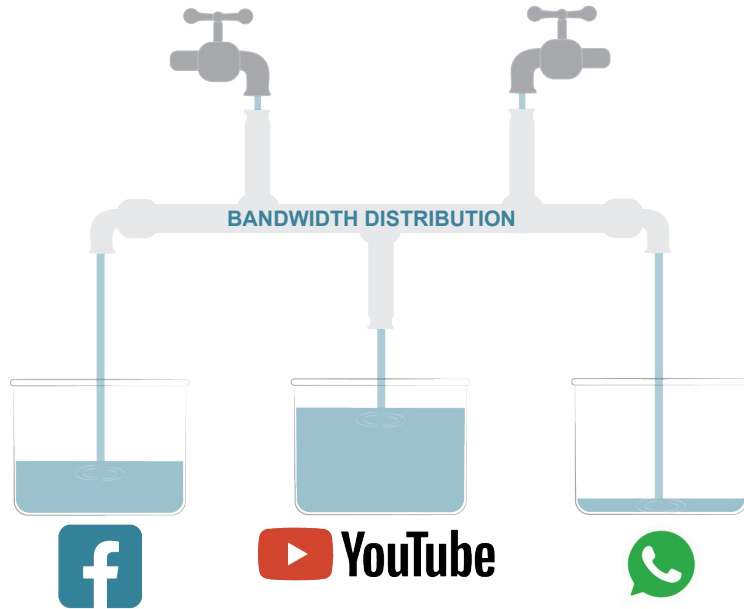
Figure 12: What is bandwidth?



- In an internet network, we call this attention **bandwidth**.
- Our networks have limited bandwidth.
- YouTube or games require a lot of bandwidth (attention).
- If everyone is trying to watch YouTube the service will be bad and slow for everyone.

### III. Considerations | Understanding how to ensure good service

Figure 13: What is bandwidth?



- To make sure there is enough bandwidth for everyone, you could discourage the use of heavy attention apps like: YouTube, games, Netflix.
- You should let people using the KPSPIN know about this so they make sure they are not grabbing all the network's attention.

### III. Considerations | Deciding on restrictions

Figure 14: Deciding on restrictions



- In order to decide how people will use the internet, you could take two approaches:
  - work together to build an understanding within the community on use expectations.
  - work with TNET to place restrictions on specific uses that use a lot of bandwidth or are inappropriate.

### III. Considerations | Creating our use standards

Figure 15: Create KPSPIN Internet Use Standards



- You can decide as a community how you would like the internet to be used:

**Use:** The internet should not be used for...

- 1.....
- 2.....
- 3.....
- 4.....

### III. Considerations | Creating our use standards

Figure 15: Create KPSPIN Internet Use Standards



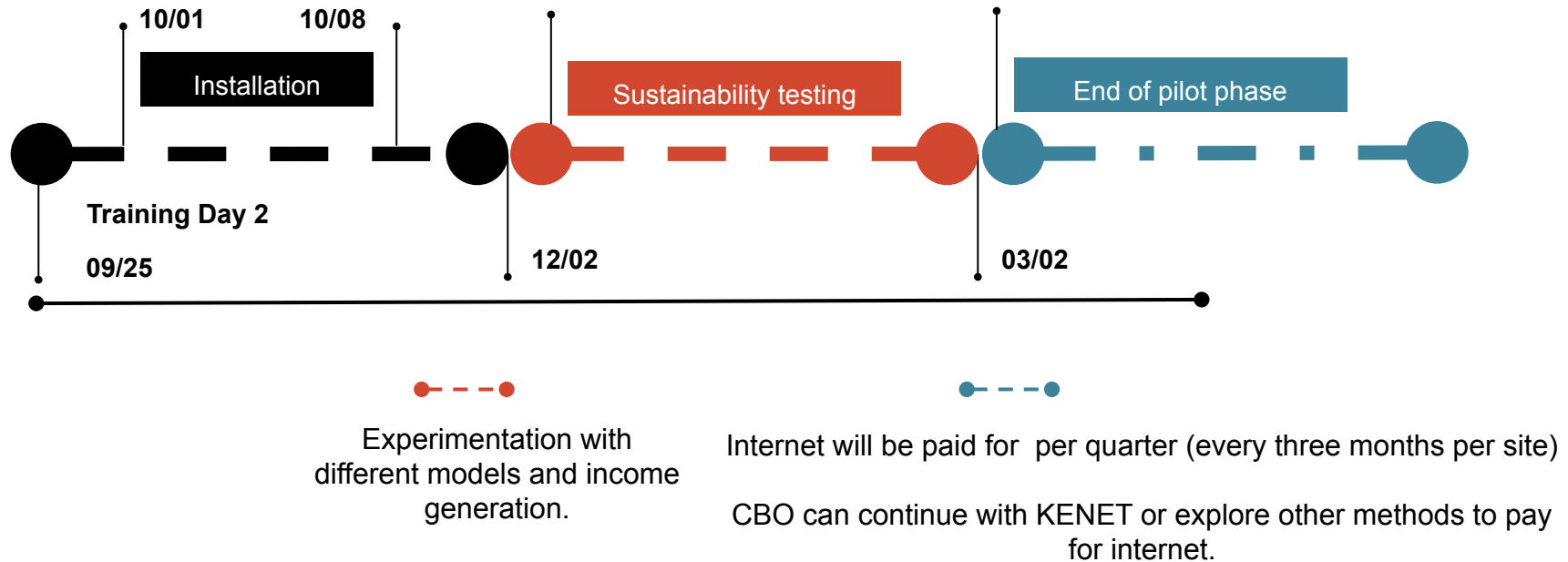
- You can decide as a community how you would like the internet to be used:

**Values:** When using the internet, we will...

- 1.....
- 2.....
- 3.....
- 4.....

## IV. Sustainability | After the pilot

Figure 16: Project timeline

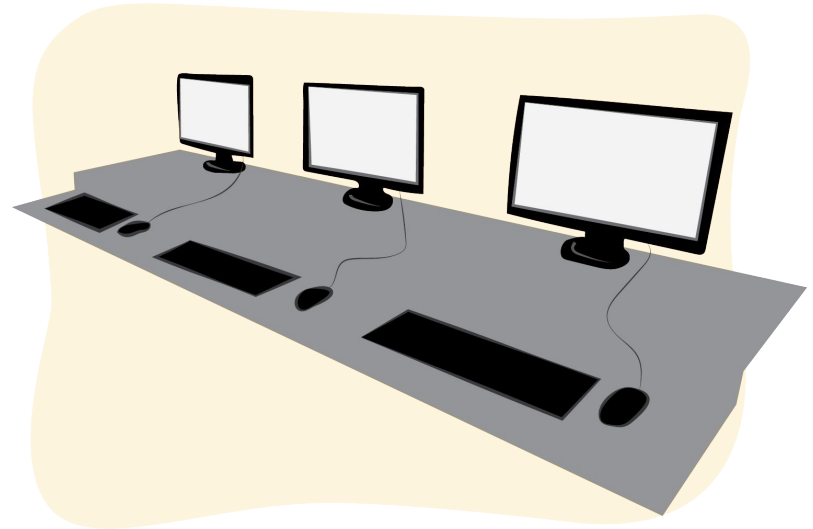


## IV. Sustainability | Sustainability ideas

Figure 17: Possible ideas for sustainability



SENSOR FOR DATA COLLECTION



INTERNET USAGE FOR BUSINESS SUPPORT  
CYBER CAFE

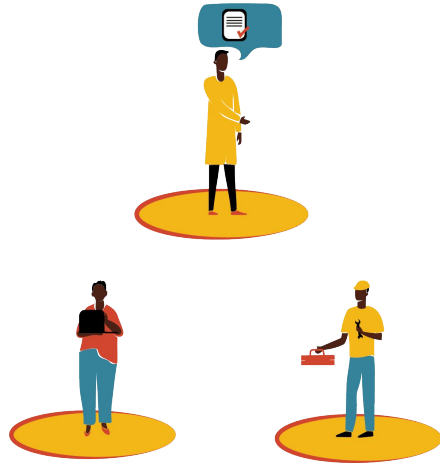
## V. Wrap Up | **Q&A**

**Questions**



## V. Wrap Up | Review of Day 2

Figure 11: Review of Day 2



**KPSPIN Roles**



**Considerations**



**Sustainability**

## V. Wrap Up | **Signup**

**Sign up for Installation Date**

**End of Training**