

KPSPIN Wireframes


Captive Portal (07/11)

Login Page

Backend Specifications:

- redirection to login screen on phone/ computer upon connection to the network
- inbuilt detection of location based on network connection with added capability for manual network selection
- location detection to trigger connection to particular CBO's m-pesa account at backend
- Bi-lingual language capabilities with the capacity to toggle between English and Swahili
- login with user's phone number (no password required)

Welcome to KPSPIN
A community wireless network



English **Swahili**

Please enter your phone number to enter the network

Enter phone number

Select your location

VUKHA

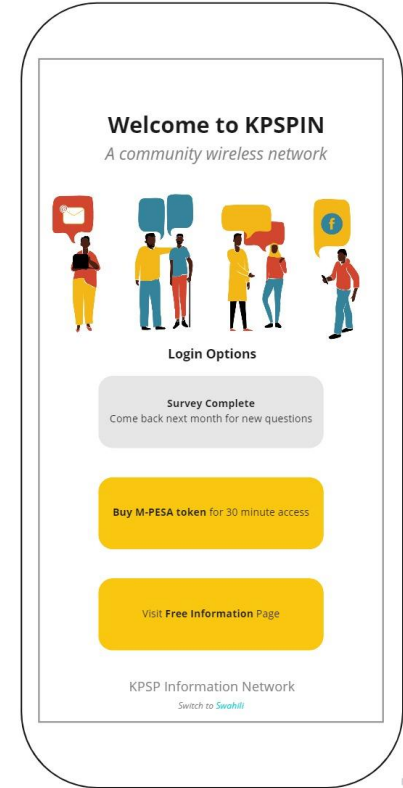
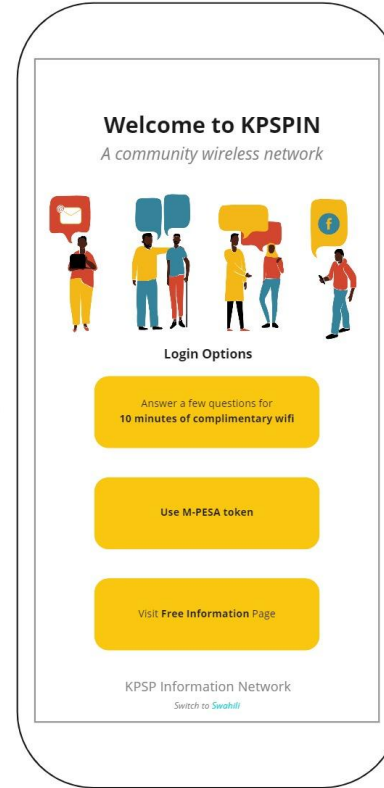
By connecting to this Wi-Fi network you are agreeing to our [Terms of Service](#).

KPSP Information Network

Homepage

Backend Specifications:

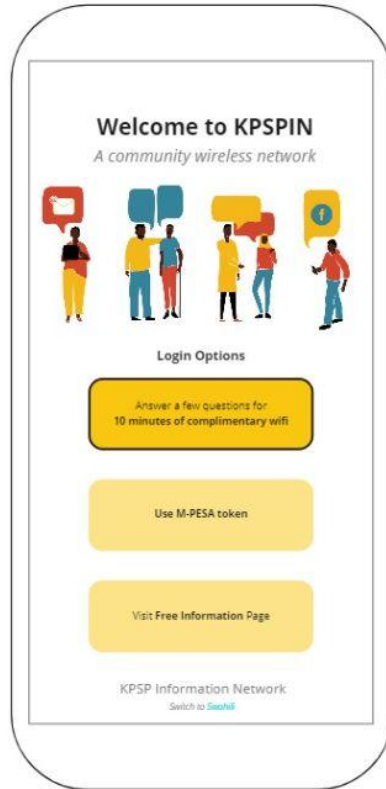
- Phone number to be stored in and checked against database on server to check if users have filled free survey and which homepage they will be shown
- Language toggle option at bottom



Option 1: Survey for free access (continued)

Backend Specifications:

- Survey to be hosted on typeform, linked into the captive portal
- Bi-lingual text in Typeform with Swahili as first language
- one survey to be hosted on the platform at one time
- new surveys to be uploaded each month



Option 1: Survey for free access

Backend Specifications:

- Token to be generated and sent to user's login phone number (acts as an authentication mechanism as well as database identifier)
- Token number should correctly trigger free usage access for specified time (10 minute).



A survey form titled "KPSP Information Network" with the subtitle "A community wireless network". The form asks the user to select a location where they know masks are supposed to be built. The options are: Sorangumbe ward, Guborewa, Sorangumbe West, Kibimu Ndoga, All villages, and Other. The form is powered by Typeform and shows 0% completed.

✕

2 * Ikwiya indle, uneyun maholi barabara zinatakwisa kujongwa? (If yes, do you know where the masks are supposed to be built?)

☐ Sorangumbe ward

☐ Guborewa

☐ Sorangumbe West

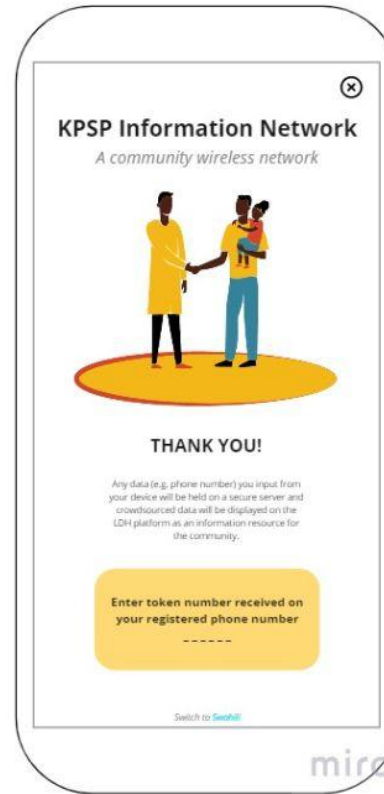
☐ Kibimu Ndoga

☐ All villages

☐ Other

0% completed

Powered by Typeform



A "THANK YOU!" screen for the KPSP Information Network. It features an illustration of two people, one holding a child, standing on a yellow oval. The text states that any data input will be held on a secure server and displayed on the LDH platform as an information resource for the community. It prompts the user to enter the token number received on their registered phone number.

✕

KPSP Information Network
A community wireless network

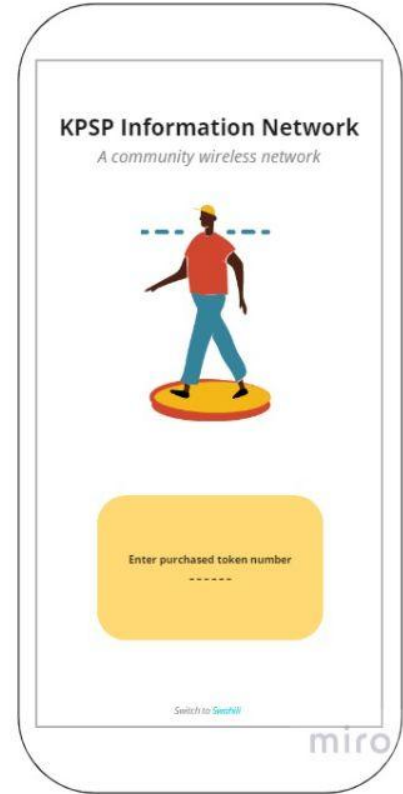
THANK YOU!

Any data (e.g. phone number) you input from your device will be held on a secure server and crowdsourced data will be displayed on the LDH platform as an information resource for the community.

Enter token number received on your registered phone number

Switch to Simbali

miro



A screen for entering the purchased token number for the KPSP Information Network. It features an illustration of a person standing on a yellow oval. The text prompts the user to enter the purchased token number.

KPSP Information Network
A community wireless network

Enter purchased token number

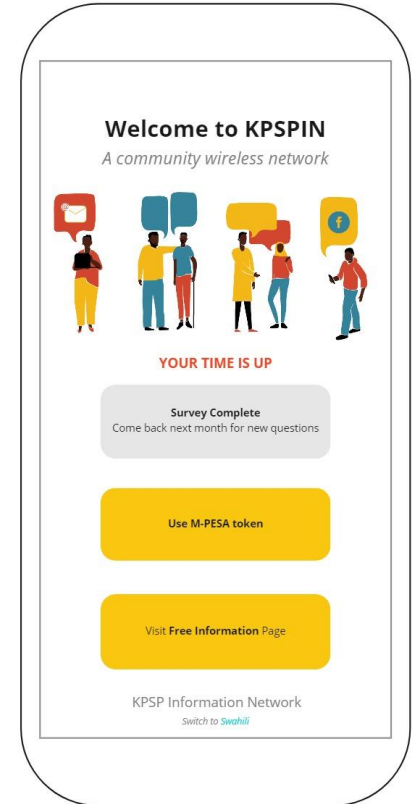
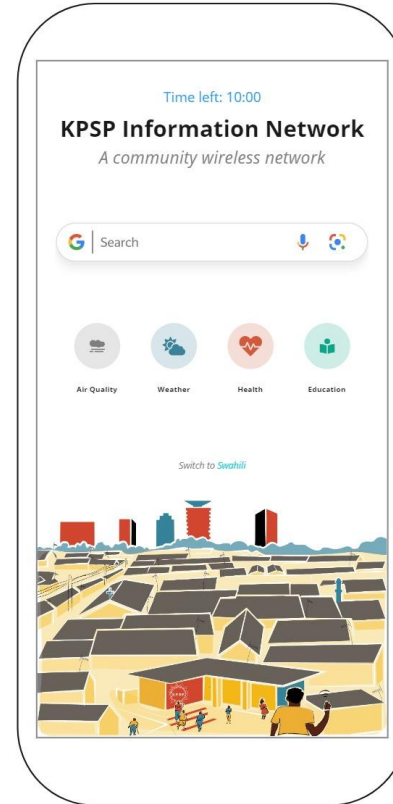
Switch to Simbali

miro

Internet Access Page and Time Out Options

Backend Specifications:

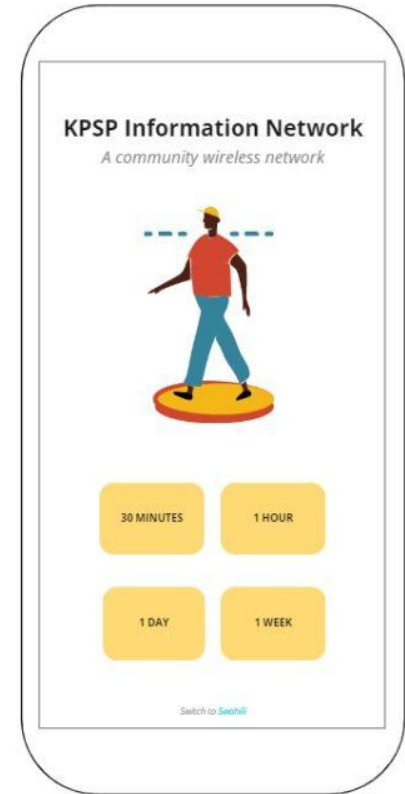
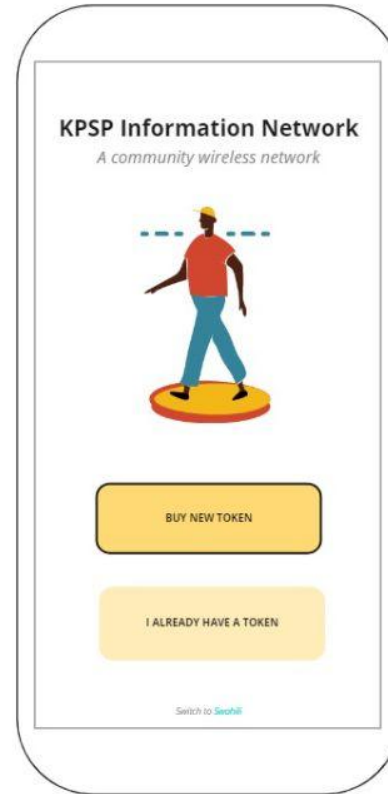
- Time left to be shown on top of internet access page.
- Time left to be calculated since entering token code and getting access to internet network.
- Time Out Page Same as Home Page with message "Your Time is Up"



Option 2: Using M-Pesa Token: Buy New Token

Backend Specifications:

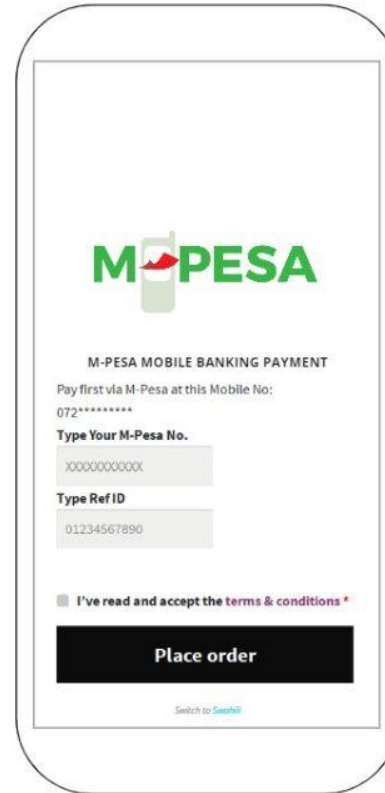
- voucher options to be specified with costs (based on business plan)



Option 2: Using M-Pesa Token: Buy New Token (continued)

Backend Specifications:

- The selected access amount should trigger/reflect relevant payment information and amount in the m-pesa payment portal.



M-PESA

M-PESA MOBILE BANKING PAYMENT

Pay first via M-Pesa at this Mobile No:
072*****

Type Your M-Pesa No.

XXXXXXXXXXXX

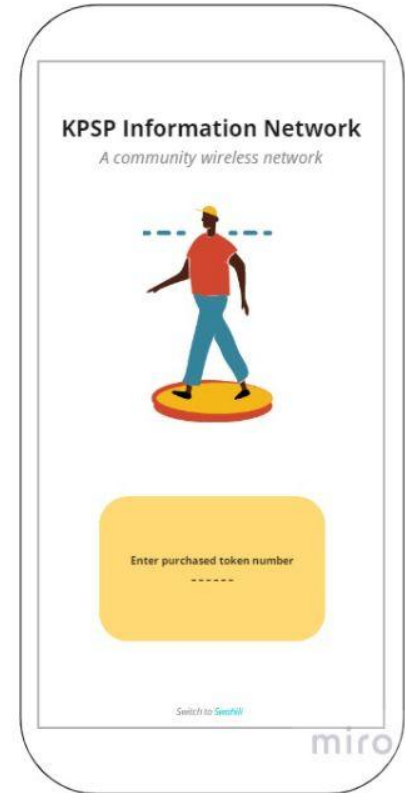
Type Ref ID

01234567890

☐ I've read and accept the [terms & conditions](#) *


Place order

[Switch to Swahili](#)



KPSP Information Network

A community wireless network



Enter purchased token number

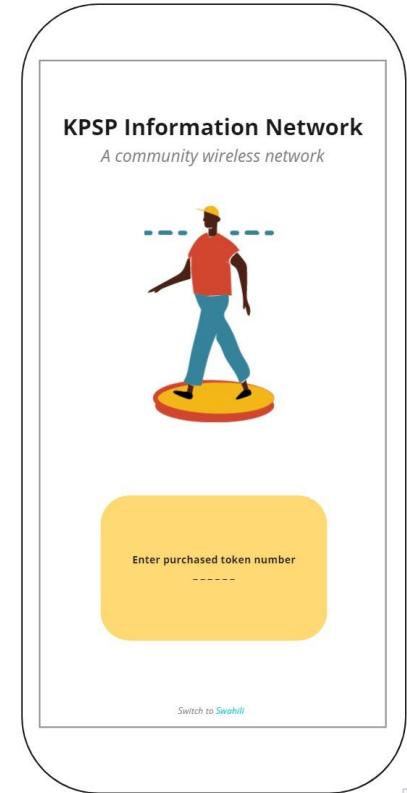
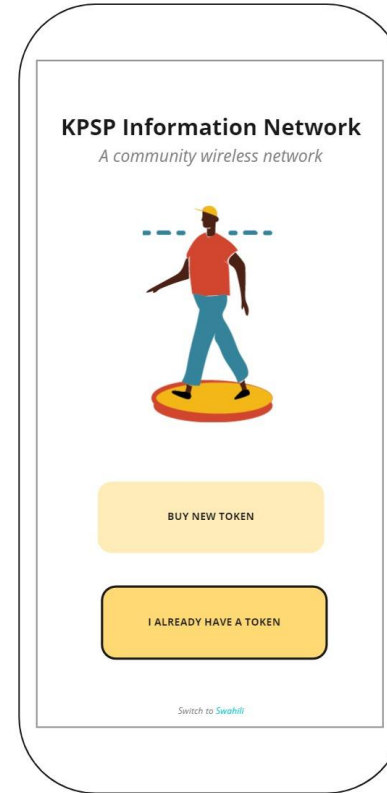
[Switch to Swahili](#)

miro

Option 2: Using M-Pesa Token: Already have Token

Backend Specifications:

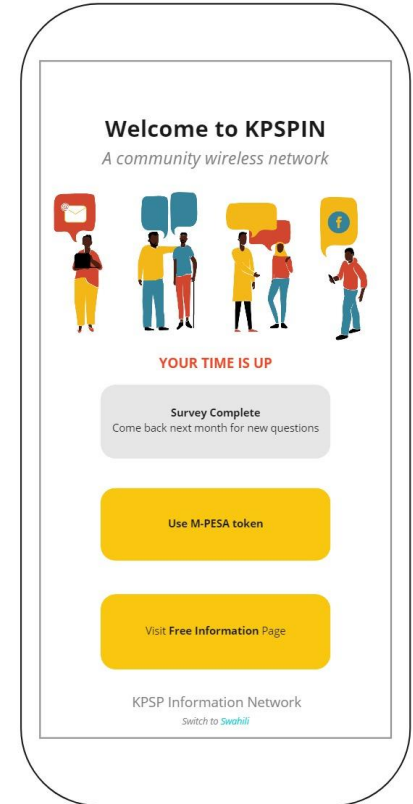
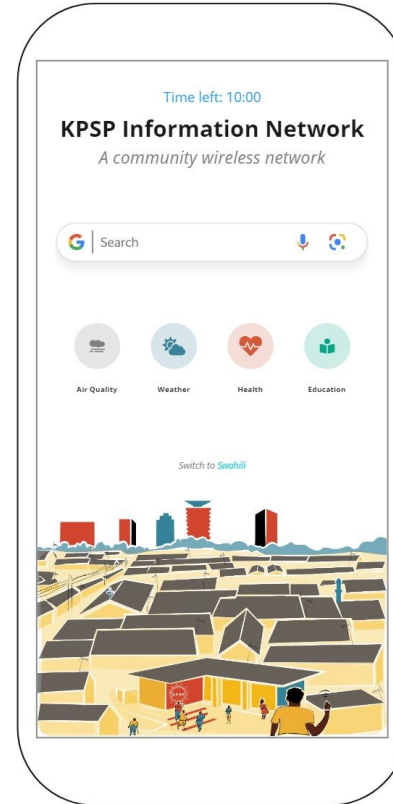
- More useful in case of longer duration tokens
- Time remaining information to be stored in captive portal linked to token code and login phone number information.



Internet Access Page and Time Out Options

Backend Specifications:

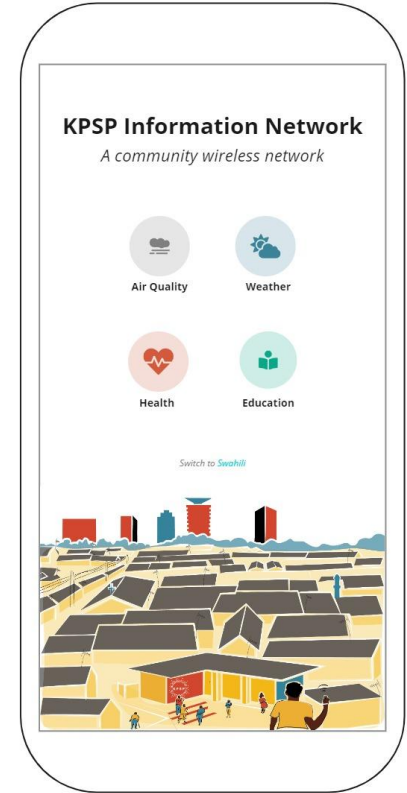
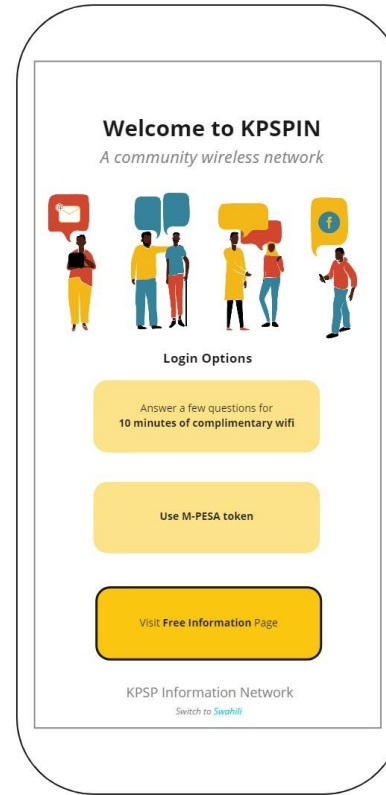
- Time left to be shown in access duration. (more than 60 minutes to be displayed in hour units, more than 24 hours to be displayed in day units).relevant units based on
- Time left to be calculated since entering token code and getting access to internet network.
- Time Out Page Same as Home Page with message "Your Time is Up".



Free Information Page

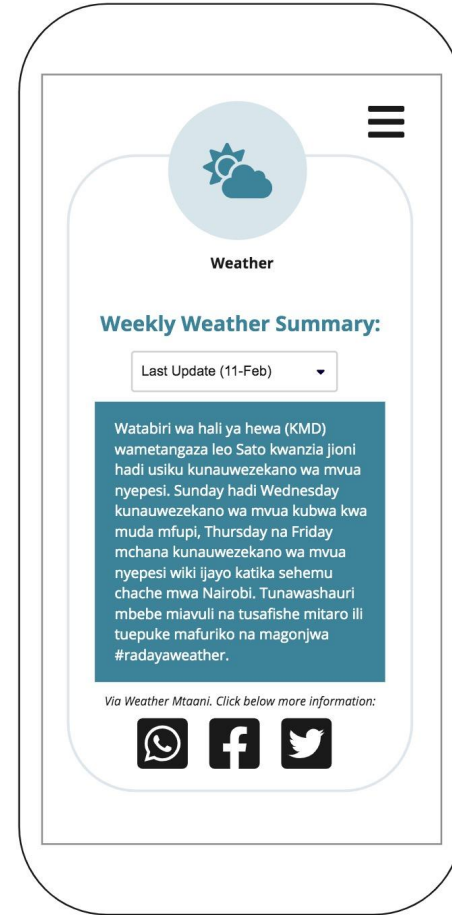
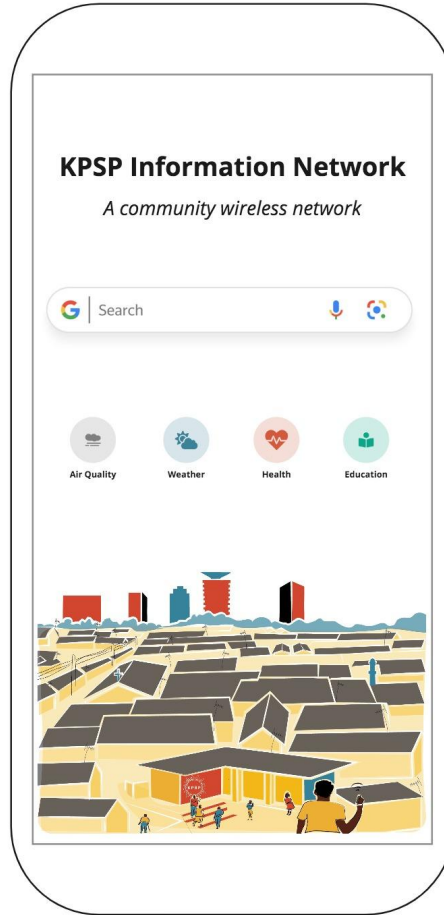
Backend Specifications:

- Free information page to contain links to freely accessible URLs via clicking on relevant icons.

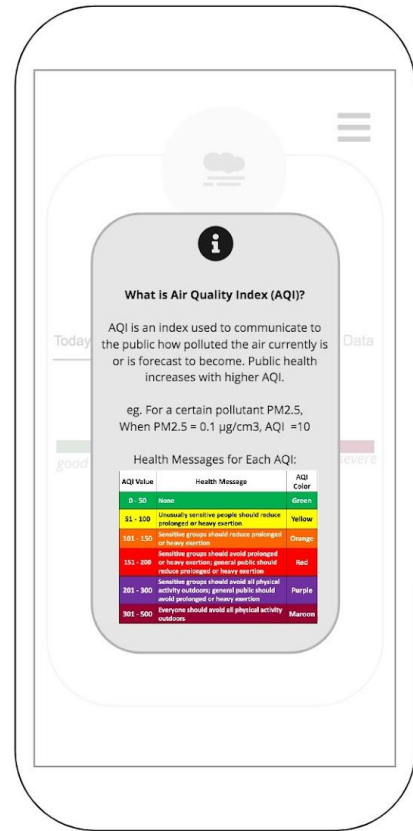
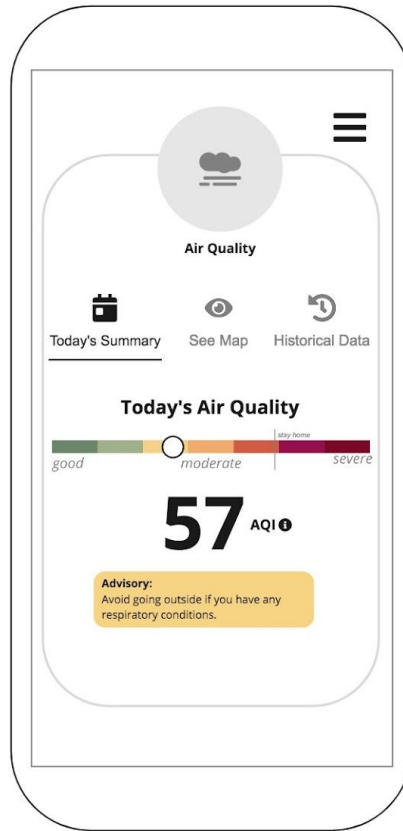
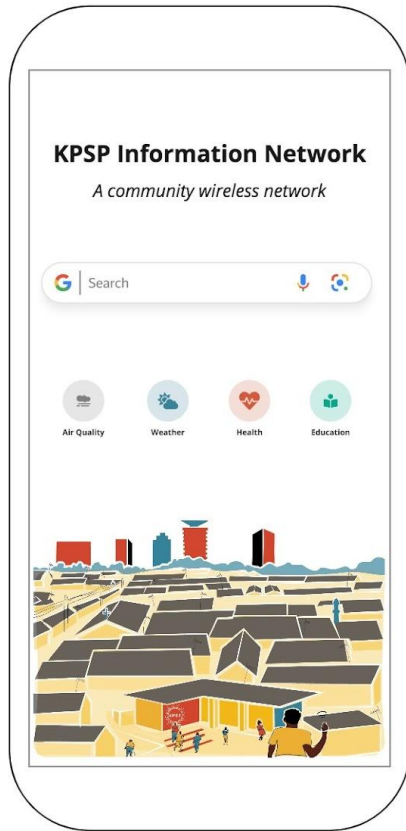


Inside KPSPIN

e.g.
Weather



e.g. Air
Quality



e.g. Air
Quality

